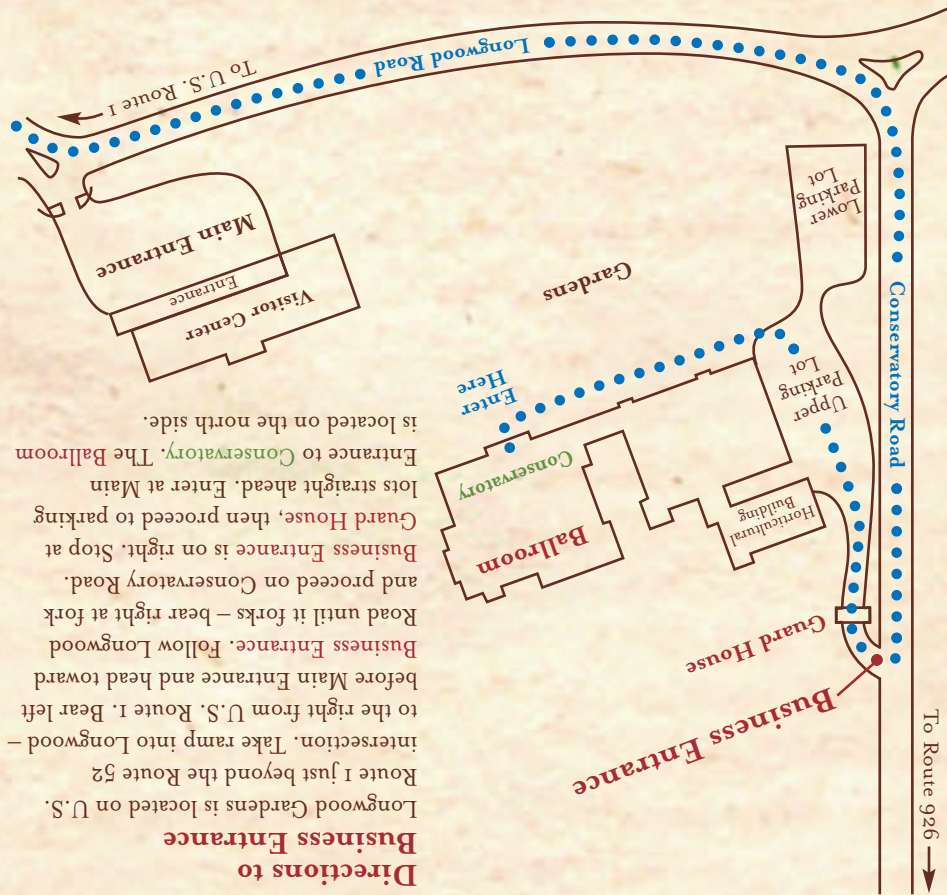


Kim-Eric Williams  
 Sylvia B. Seppala  
 James D. Seagers  
 A. Dorniey Seagers  
 Kenneth S. Peterson  
 Alfred J. Nicolosi  
 Ronald A. Hendrickson  
 Nancy Cataleno Hendrickson  
 Margaret Sooy Bridwell

Britt M. Apell  
 Committee

Sandra S. Pfaff  
 Frances O. Allmond  
 Co-Chairs

Annual Forefathers' Day  
 Luncheon



**Directions to Business Entrance**  
 Longwood Gardens is located on U.S. Route 1 just beyond the Route 52 intersection. Take ramp into Longwood – to the right from U.S. Route 1. Bear left before Main Entrance and head toward Business Entrance. Follow Longwood Road until it forks – bear right at fork and proceed on Conservatory Road. Business Entrance is on right. Stop at Guard House, then proceed to parking lots straight ahead. Enter at Main Entrance to Conservatory. The Ballroom is located on the north side.

Celebrate the  
 300th Anniversary of

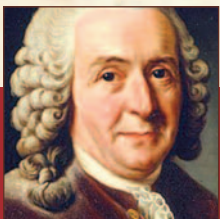
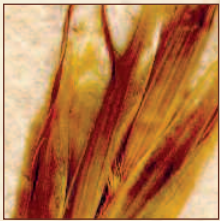
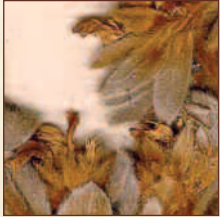
*Carolus Linnaeus*



Annual Forefathers' Day  
 Luncheon

Sunday, March 25, 2007





*Carl v. Linné*

The Officers and Councillors  
of the

## **SWEDISH COLONIAL SOCIETY**

request the pleasure of your company

at the

## **Annual Forefathers' Day Luncheon**

and

## **300th Anniversary Celebration of**

*Carolus Linnaeus*

“live” as performed by Hans Odöö

**Sunday, March 25, 2007**

11:30 a.m. Cash Bar

12:15 p.m. Luncheon

### **Longwood Gardens Ballroom**

U.S. Route 1, Kennett Square, Pennsylvania 19348-0501

*Please use Business Entrance for your convenience.*

For more information contact: Fran Allmond 302.762.2281 or Sandra.Pfaff@verizon.net

The year 2007 will witness events world-wide which celebrate the 300th anniversary of the birth of Carolus Linnaeus, the great 17th century Swedish naturalist who invented scientific classification and is considered the father of modern biology. In the present-day New Sweden Colony on the Delaware, we are excited to welcome Hans Odöö, a native Swede who devotes himself exclusively to bringing Carolus Linnaeus to life. Hans has portrayed Linnaeus on national and international radio and television and can count more than 2,500 performances in character for school children, scientists, presidents and kings.